The logo features the word "RELY" in a bold, dark grey, sans-serif typeface. A solid blue circle is positioned within the counter of the letter "E".

RELY

INDUSTRIES FZCO

WHO
WE
ARE



RELY INDUSTRIES was founded in Dubai in 2004. Today, the multidisciplinary manufacturing powerhouse prides itself on being the only full-fledged production facility in the region which runs all of its operations in-house. In addition, RELY Industries provides a wide variety of solutions such as Display, Branding & Retail Furnitures, Exhibition and Event builds, Fit-out works, 3D Thematic Structures, Pavilions & Fast track construction.

Our Vision is to build RELY into becoming a world renowned go to Brand in all types of smart & Efficient custom fabrications.

Our Mission is to sustain a strategic competitive advantage that attracts and retains best clients, employees and partners through an unwavering focus on superior quality and service, cost efficiencies and creative solutions.

VALUES & PRINCIPLES:



Social responsibility Quality, product integrity and speed to market are at the heart of what we do.



Innovation We strive to continuously improve, diversify and innovate our product line. Evolution is at the core of our mission.



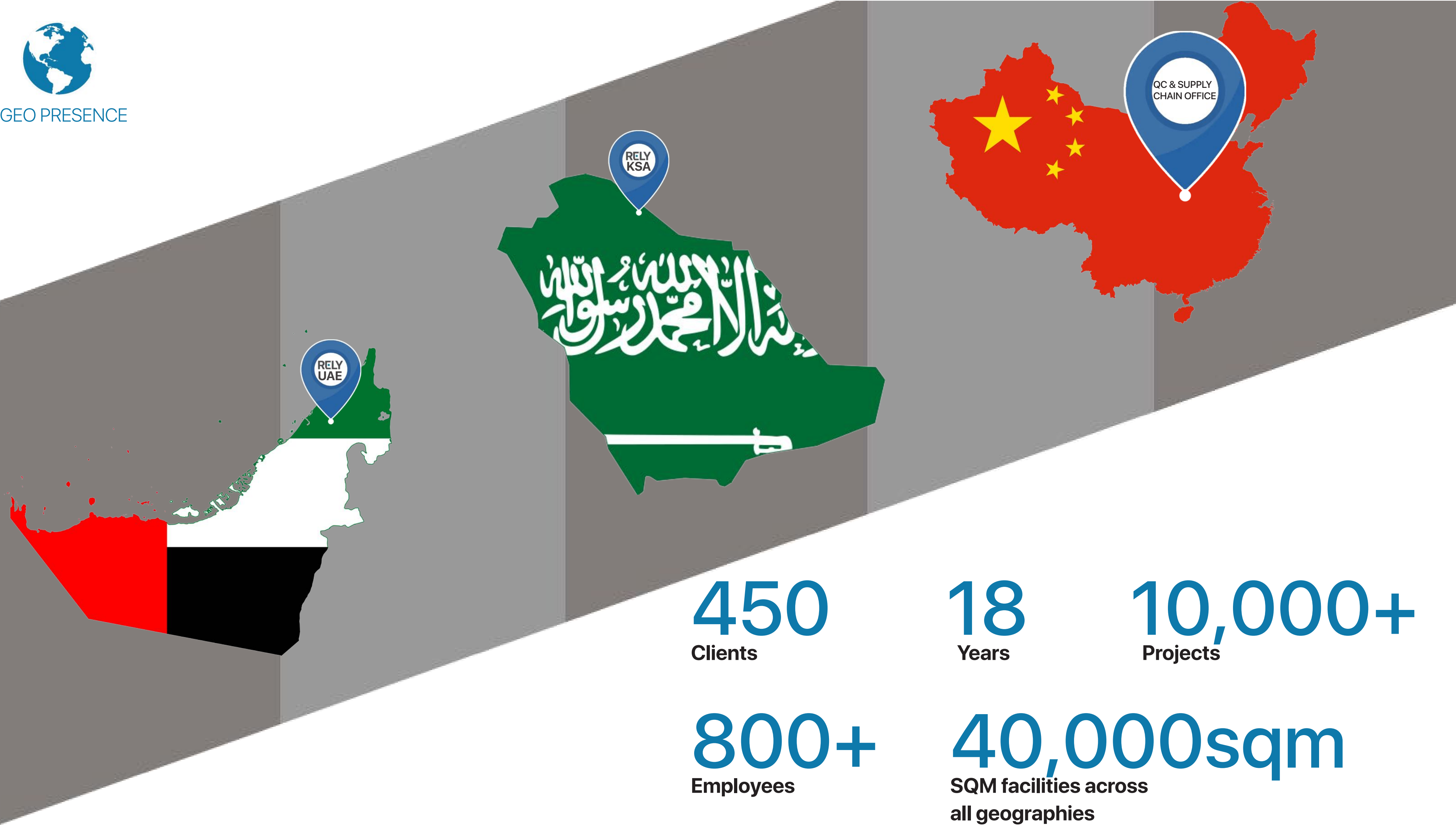
Customer Focus Providing the best well rounded customer experience with every product we offer.



Performance Driven People are our #1 Asset, we deploy the best skilled personnel with diverse experiences accross multiple fields.



GEO PRESENCE



450

Clients

18

Years

10,000+

Projects

800+

Employees

40,000sqm

SQM facilities across
all geographies



WHAT
WE
DO



SOLUTIONS

OUR SUPERIOR MANUFACTURING LINES STRETCH ACROSS MULTIPLE VERTICALS

**FAST TRACK
MEGA PROJECTS**



**RETAIL FURNITURE
& POP**



**3D THEMATIC
STRUCTURES**



**EXHIBITION &
EVENT BUILDS**



**BRANDING &
SIGNAGE**



**INTERIOR
FIT-OUT**

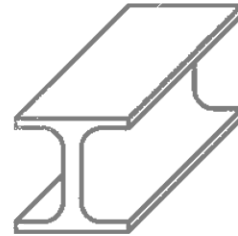




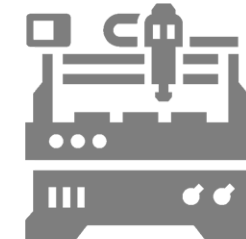
SOLUTIONS



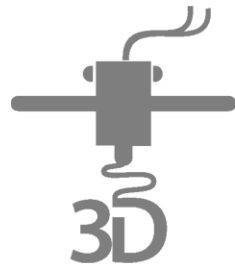
Custom & Mass Joinery works



Sheet & Structured Metal Works



Factory CNC Division



3D Printing Forming & Milling



All Types of Paint & Coating



Electrical / AV / Electronics Engineering



Digital & Screen Printing, Die Cutting



Logistics



Plastic Fabrication & Forming



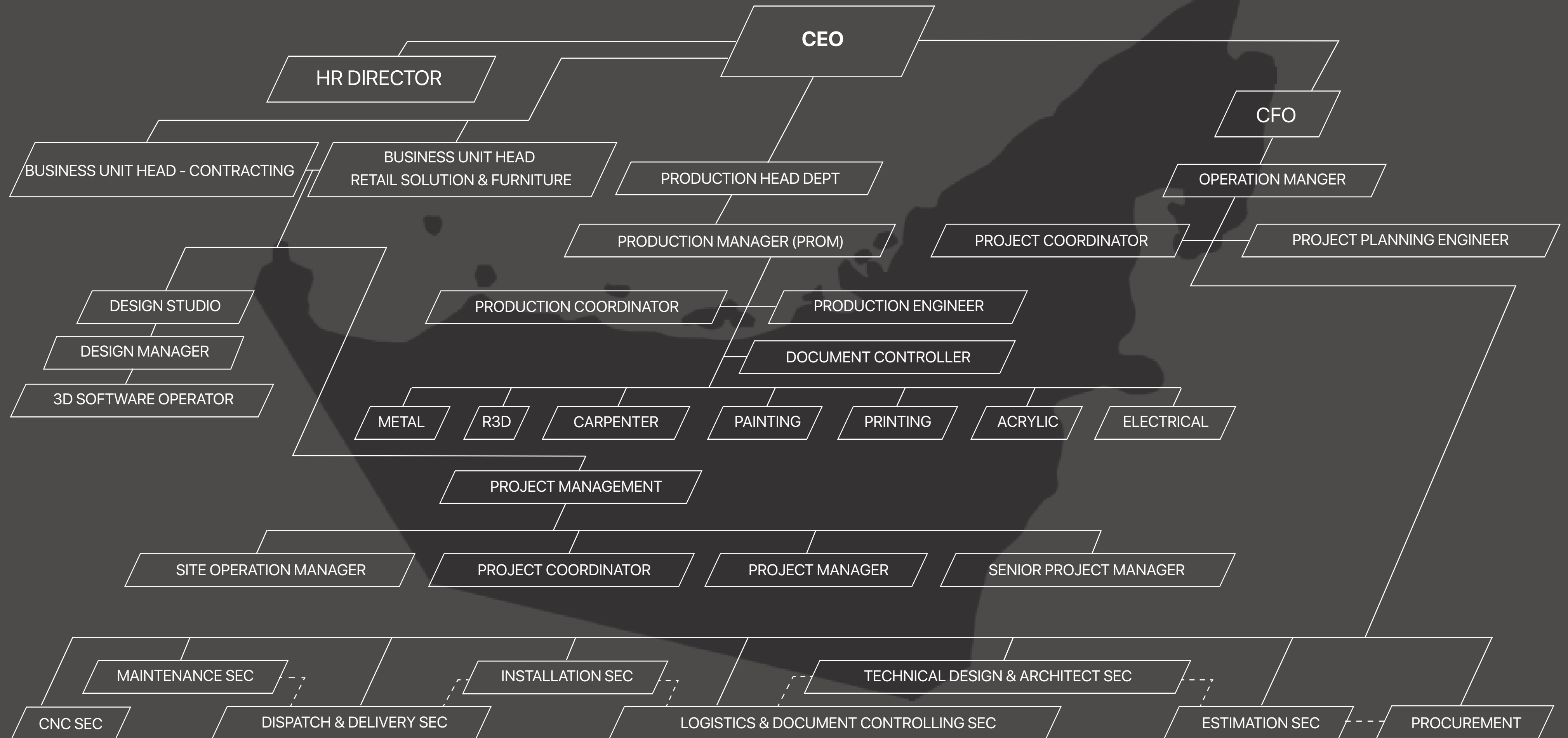
Maintenance



Storage

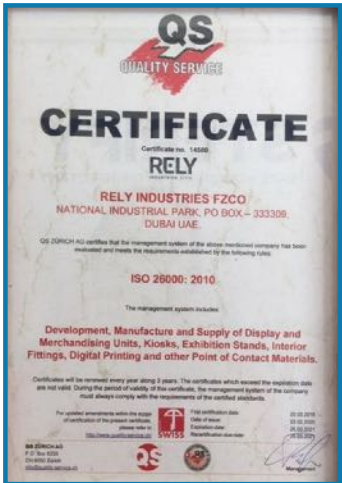


ORGANIZATIONAL STRUCTURE





ACCREDITATIONS



ISO	9001
ISO	14001
ISO	26000
OHSAS	18001

Cost Optimization



CONCEPT FEASIBILITY

Project feasibility contribution for maximum budget optimization



DESIGN TO BUDGET

Using smart value engineering & technical design methods within budget capacity



ECONOMIES OF SCALE

Smart engineering leveraging State of the Art Machinery enabling larger volume of mass-production

Time Efficiency



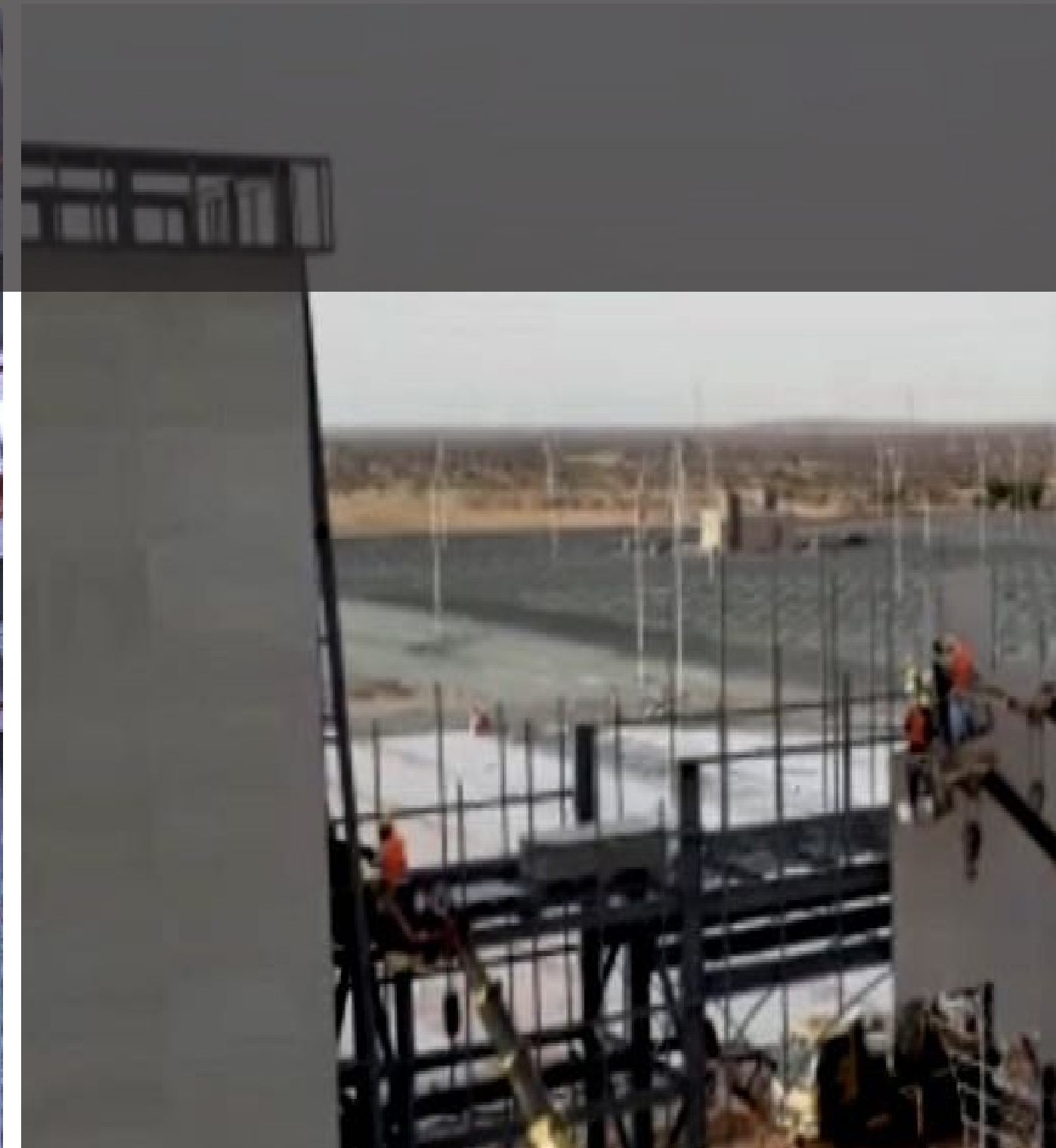
DYNAMIC DESIGN PROCESS

We approach all projects with a parallel stance on design & engineering to drive efficiency at production & installation stage



OFF-SITE CONSTRUCTION

We believe in an 80/20 rule of factory fabricated modular construction to site work



OPTIMAL SITE MANAGEMENT

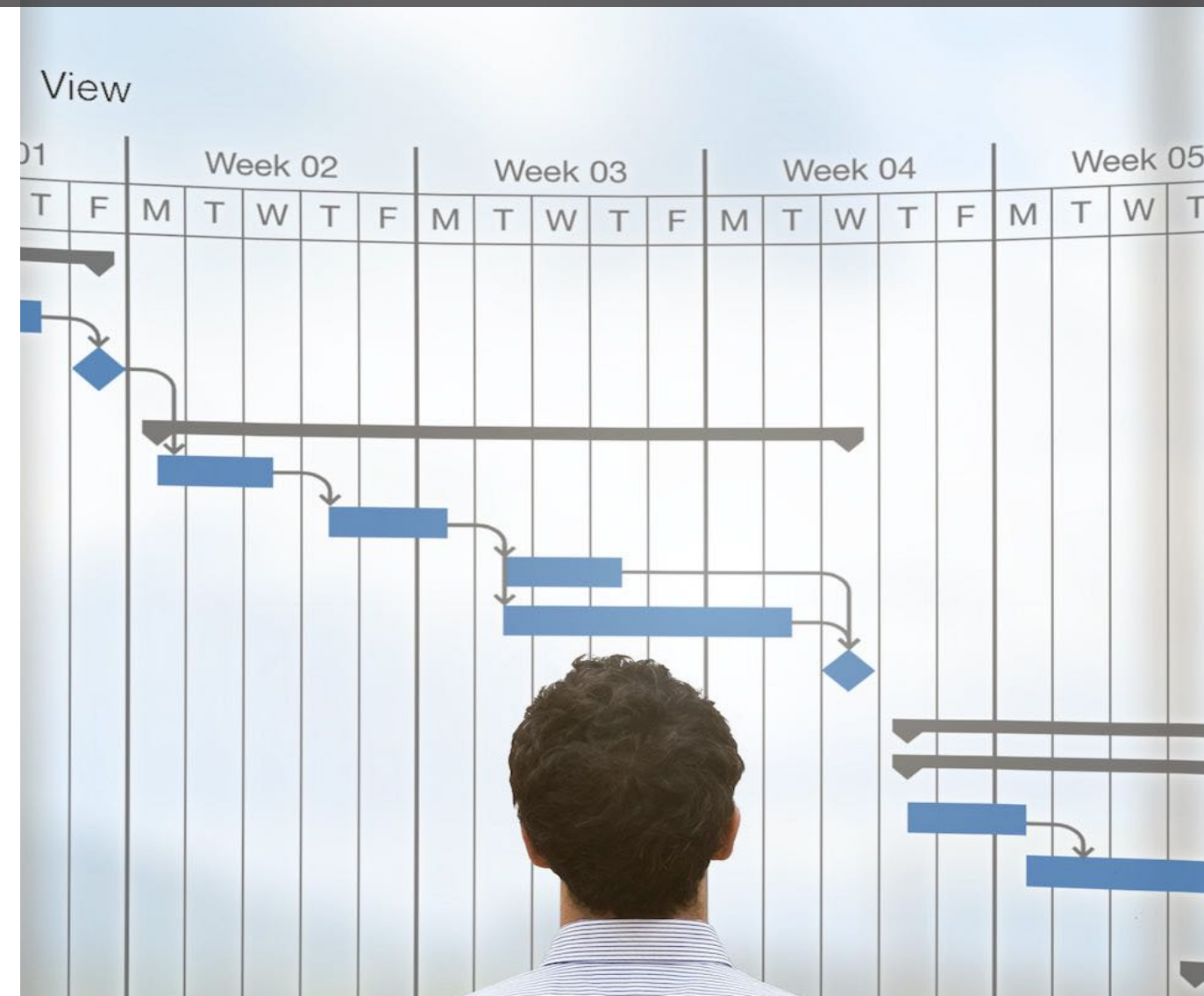
Pre-planned tightly using latest planning software across the project value chain leading to higher site control

Optimal Process Management



CLIENT TEAM EXTENSION

We integrate into the Client's team to fast-track progress



PROJECT MANAGEMENT OFFICE

Centralized function ensuring effective project planning, control and communications



TROUBLE SHOOTING

Finding solutions under pressure is integral to our DNA. We recruit, develop and equip our teams to perform accordingly

Quality Assurance & Control



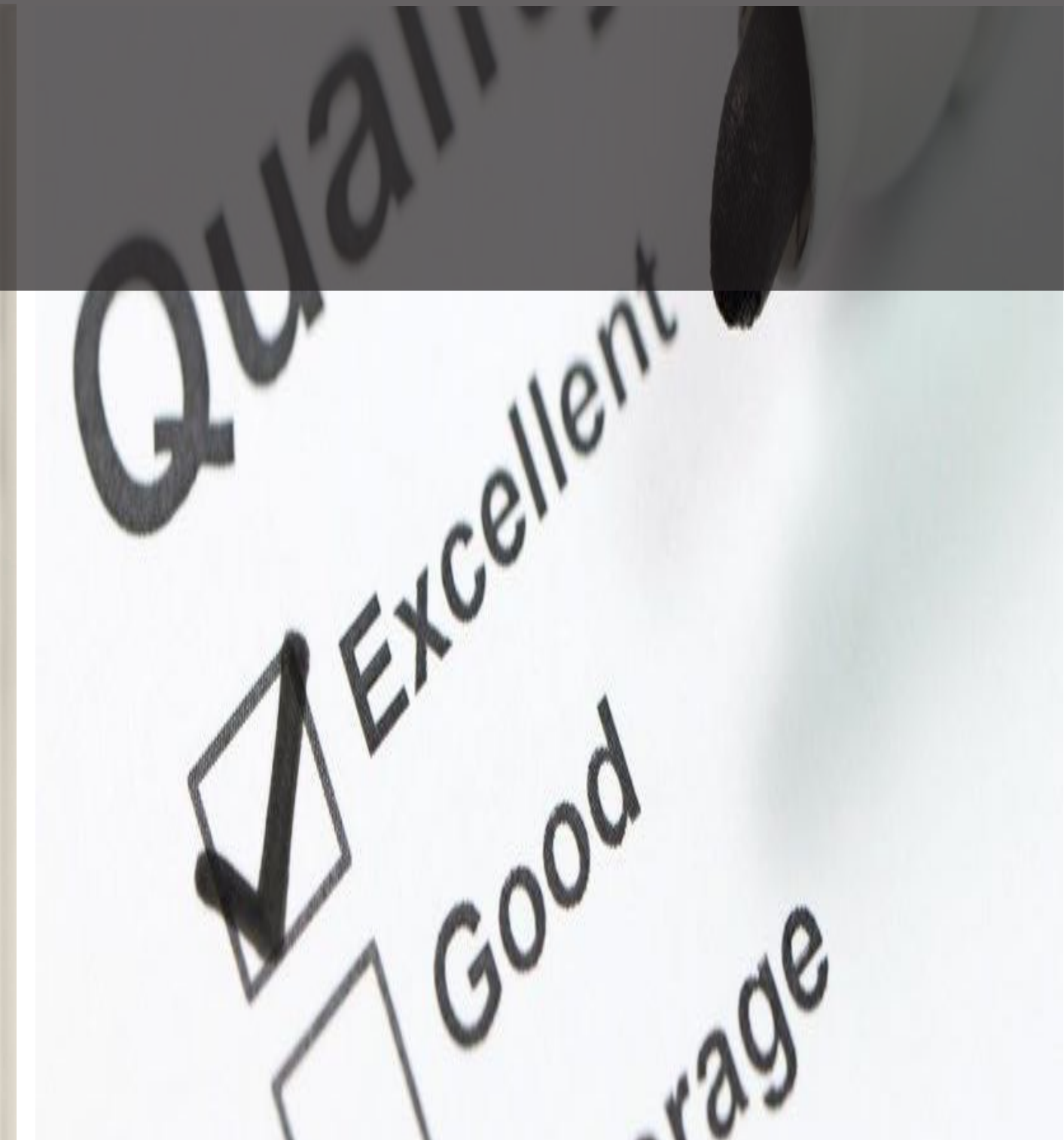
TECHNICAL DEVELOPEMENT

Comprehensive technical drawing decks to ensure execution quality & safety across the value chain



SUPPLY CHAIN

We adopt best practices in our procurement management to ensure consistent quality and optimal value



QA/QC

Dedicated QA/QC engineering team throughout the project cycle



CLIENTELE

WE WORK WITH A LARGE BASE OF MULTINATIONAL & REGIONAL CLIENTS
ACROSS ALL INDUSTRIES & SECTORS OF THE MARKET

LARGE ENTERPRISE



FMCG



TELECOM



GOVERNMENT



TECHNOLOGY



GENERAL RETAIL





PROJECT HIGHLIGHTS

FAST TRACK MEGA PROJECTS

RETAIL FURNITURE
& POP

3D THEMATIC
STRUCTURES

EXHIBITION &
EVENT BUILDS

BRANDING &
SIGNAGE

INTERIOR
FIT-OUT

































































MALI

Bénso Jalligina
مالي - أرض الضيافة

















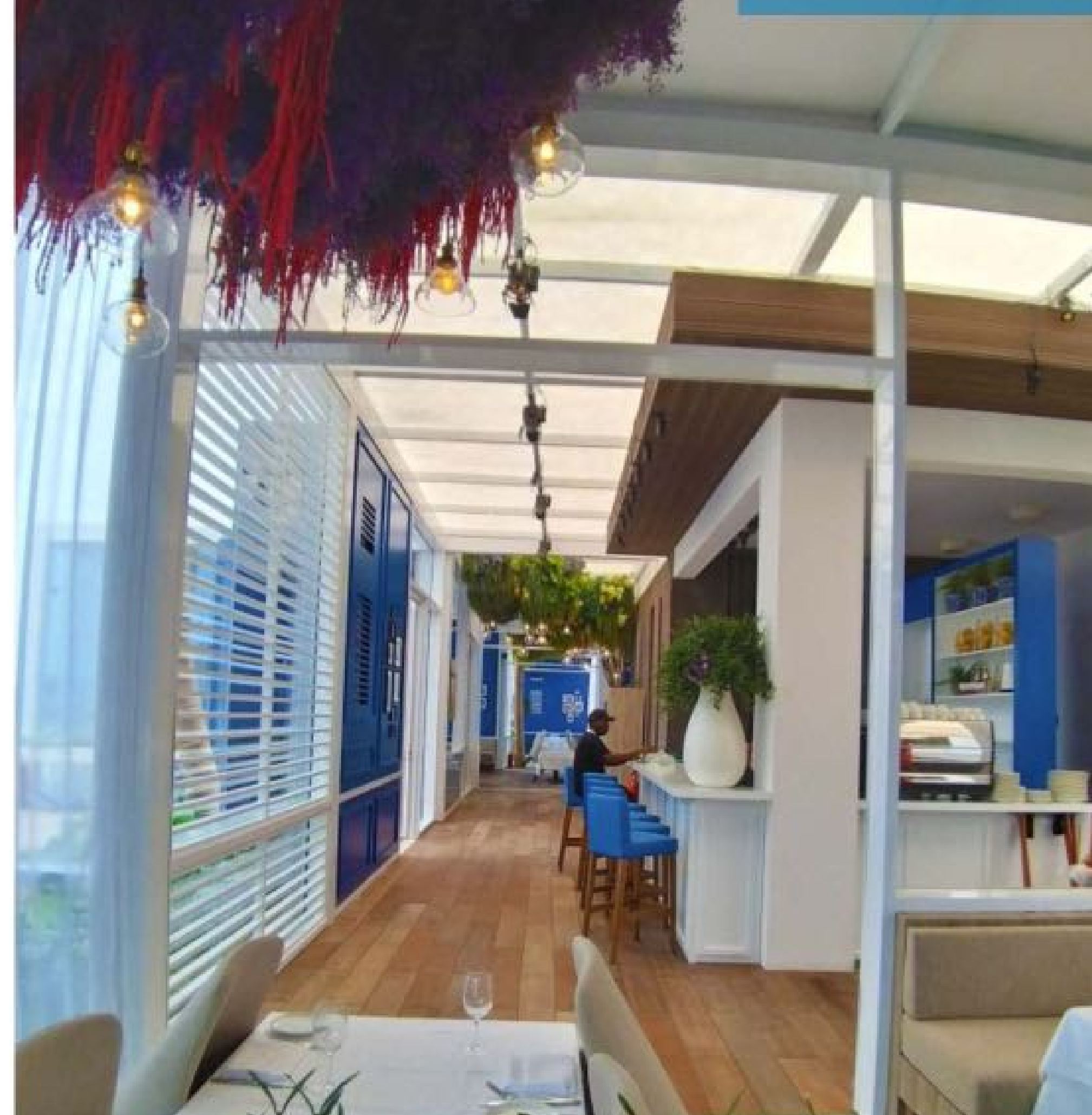


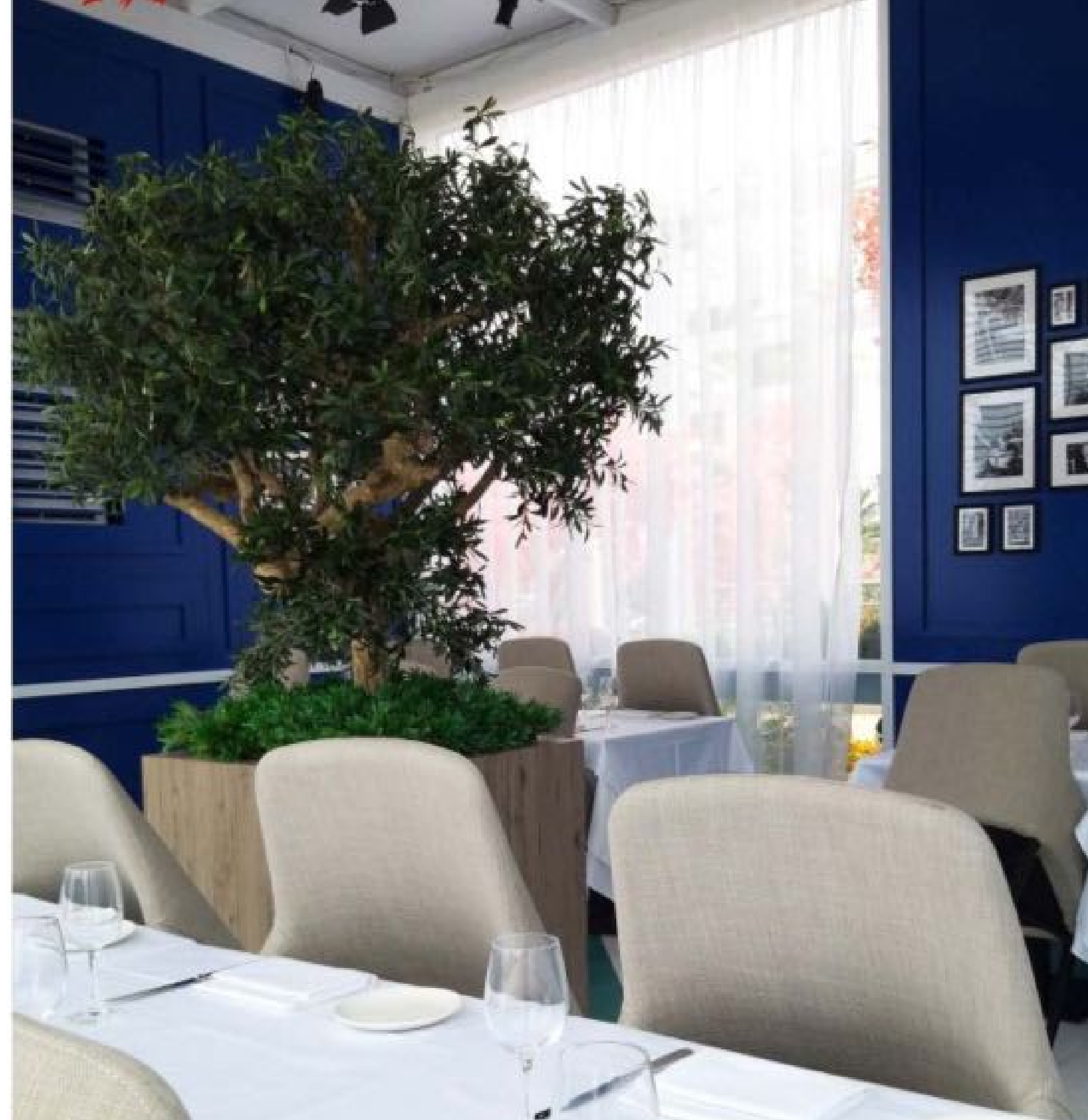














PROJECT HIGHLIGHTS

FAST TRACK

MEGA PROJECTS

RETAIL FURNITURE & POP

3D THEMATIC
STRUCTURES

EXHIBITION &
EVENT BUILDS

BRANDING &
SIGNAGE

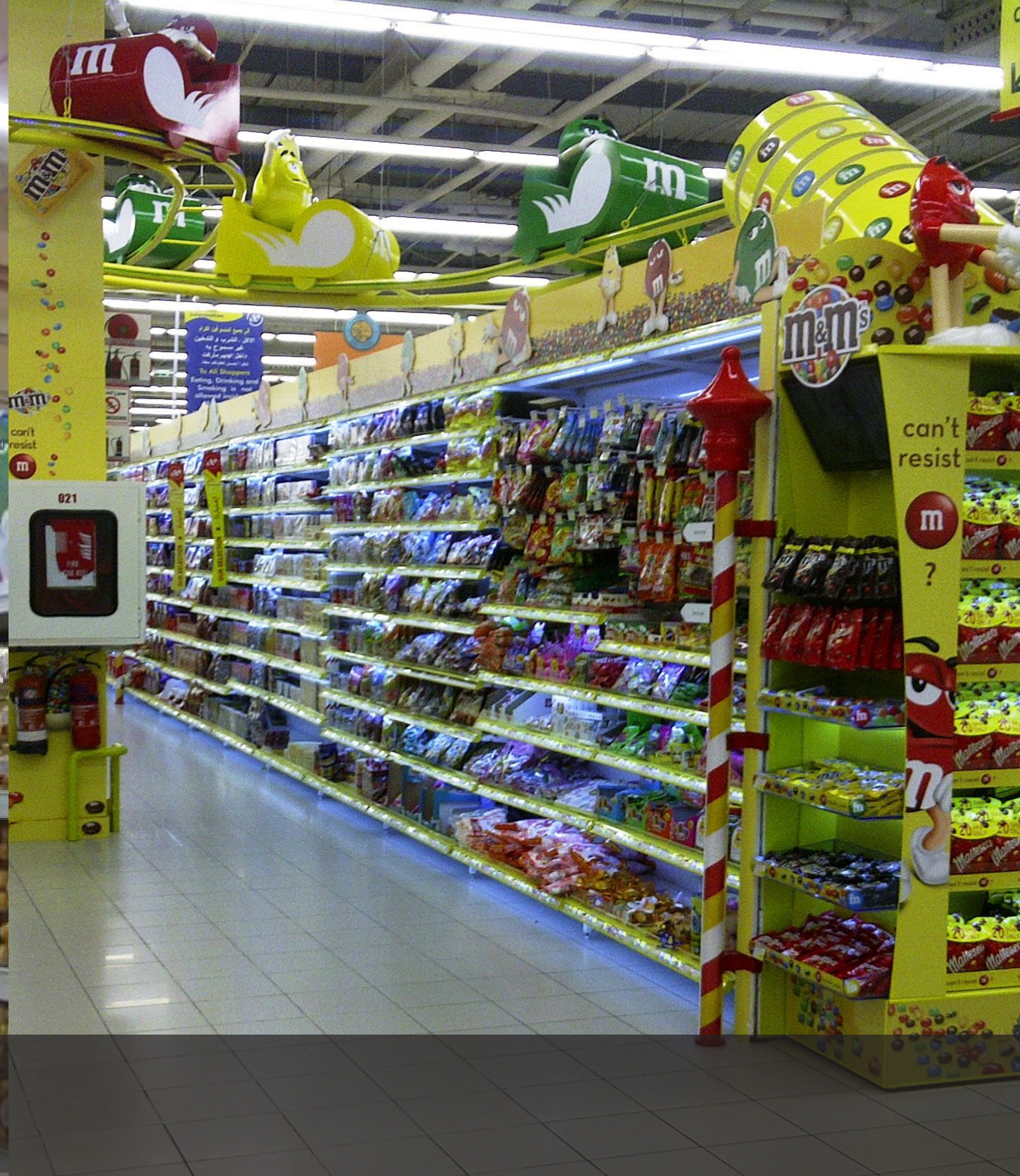
INTERIOR
FIT-OUT



















JOHNNIE WALKER

TRAVELLER'S FAVOURITES

THE PERFECT GIFT



JOHNNIE WALKER





JOHNNIE WALKER

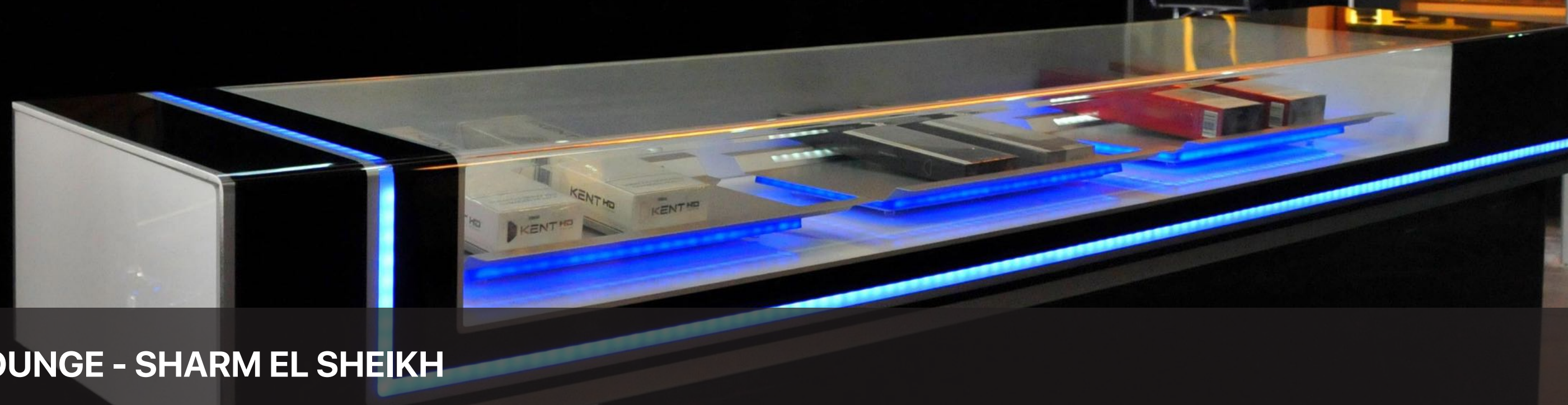
SMOKE PUI
SWEET IN I
A KISS ON
THE LIPS

JOHNNIE WALKER

HIGHBALL
DESTINATIONS
TOKYO
NEW YORK
RIO
CAPE TOWN
LONDON

JOHNNIE WALKER WALLBAY - DUTY FREE DUBAI

WELCOME TO THE K LOUNGE





FALKE







Carrefour
#جودة أولاً
#Quality First

VITAMIN DRINKS

ENERGY DRINKS

ENERGY SPORTS

ENERGY SNACKS

عصائر
POUCH DRINKS



oud milano عود ميلانو









PROJECT HIGHLIGHTS

FAST TRACK

MEGA PROJECTS

RETAIL FURNITURE
& POP

**3D THEMATIC
STRUCTURES**

EXHIBITION &
EVENT BUILDS

BRANDING &
SIGNAGE

INTERIOR
FIT-OUT











"So many of our dreams at first seem impossible, then they seem improbable, and then when we summon the will, they soon become inevitable."

Christopher Reeve





RELY
INDUSTRIES FZCO

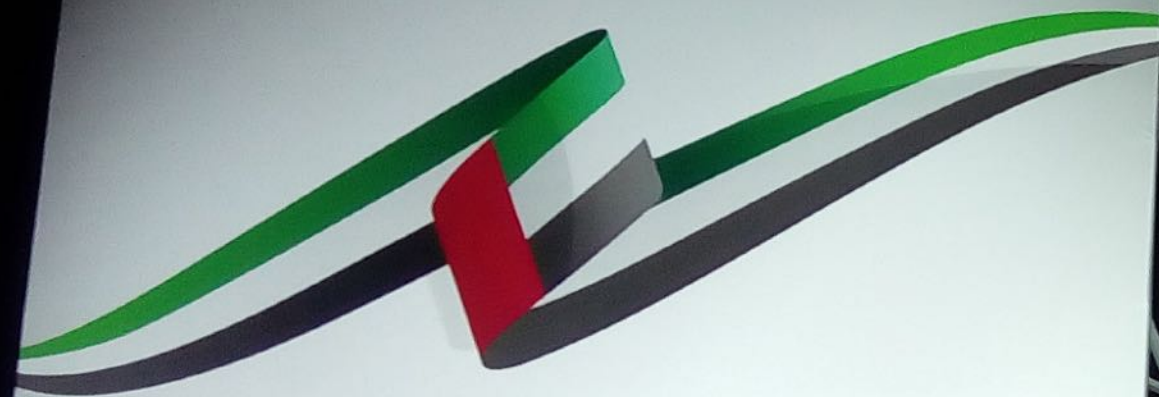
SPEEDY COMICS - CITY WALK DUBAI











عاش إنحداد إماراتنا
HAPPY NATIONAL DAY





PROJECT HIGHLIGHTS

FAST TRACK
MEGA PROJECTS

RETAIL FURNITURE
& POP

3D THEMATIC
STRUCTURES

EXHIBITION & EVENT BUILDS

BRANDING &
SIGNAGE

INTERIOR
FIT-OUT







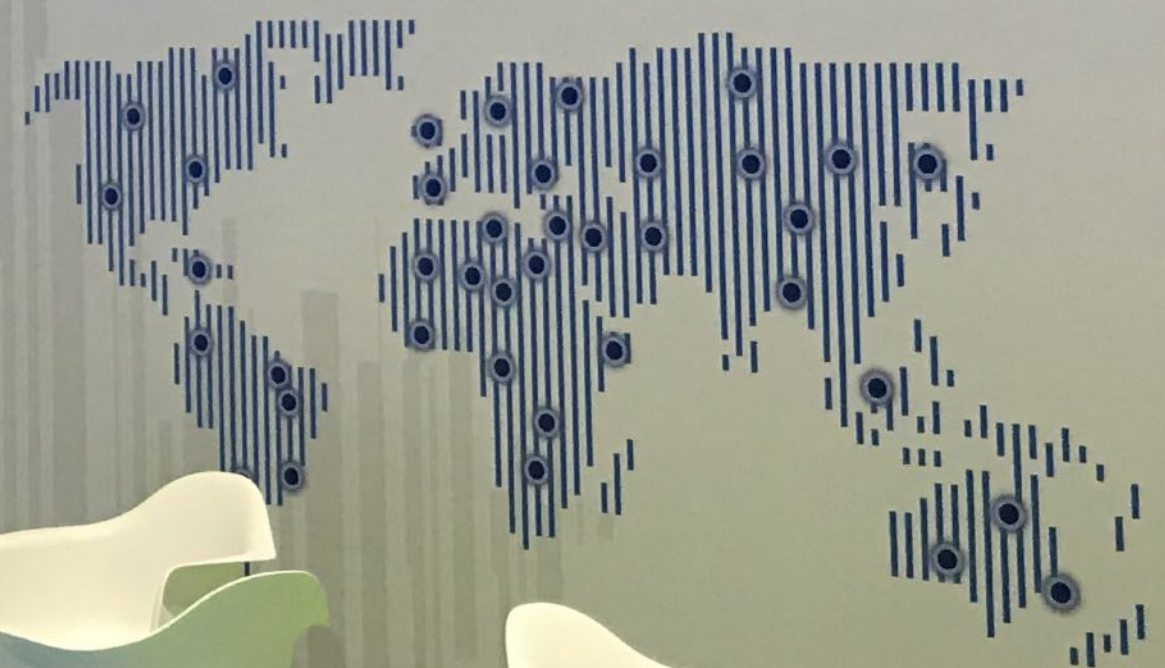




ITUPP
DUBAI 2018

BOARD ROOMS

ITU MEMBERS CONNECT THE WORLD

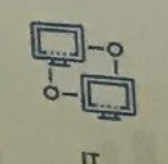


193
MEMBER STATES

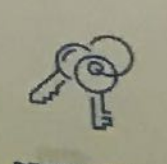
FROM EXPERT FIELDS IN:



BROADCAST



IT



REGULATORS

















Canon

Canon

Canon
Keep ev

New accessories

XProtect® clients

netavis

The Platform for
Security and Business

come
and
see



NOVARTIS EXHIBITION STAND - DWTC



East West
الشرق والغرب

RELY
INDUSTRIES FZCO

MARINA SKY - ABU DHABI











PROJECT HIGHLIGHTS

FAST TRACK
MEGA PROJECTS

RETAIL FURNITURE
& POP

3D THEMATIC
STRUCTURES

EXHIBITION &
EVENT BUILDS

**BRANDING &
SIGNAGE**

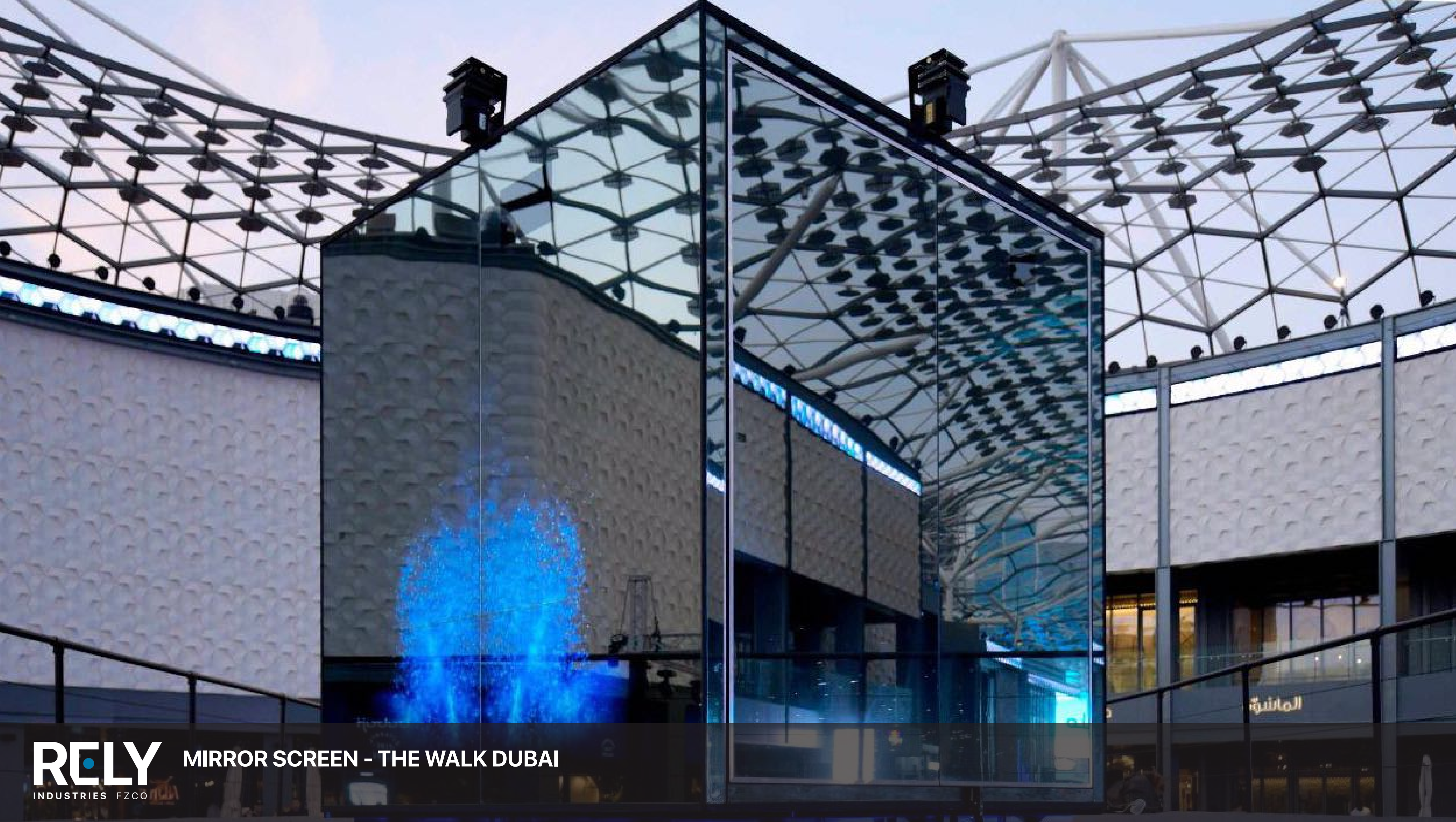
INTERIOR
FIT-OUT











RELY
INDUSTRIES FZCO

MIRROR SCREEN - THE WALK DUBAI

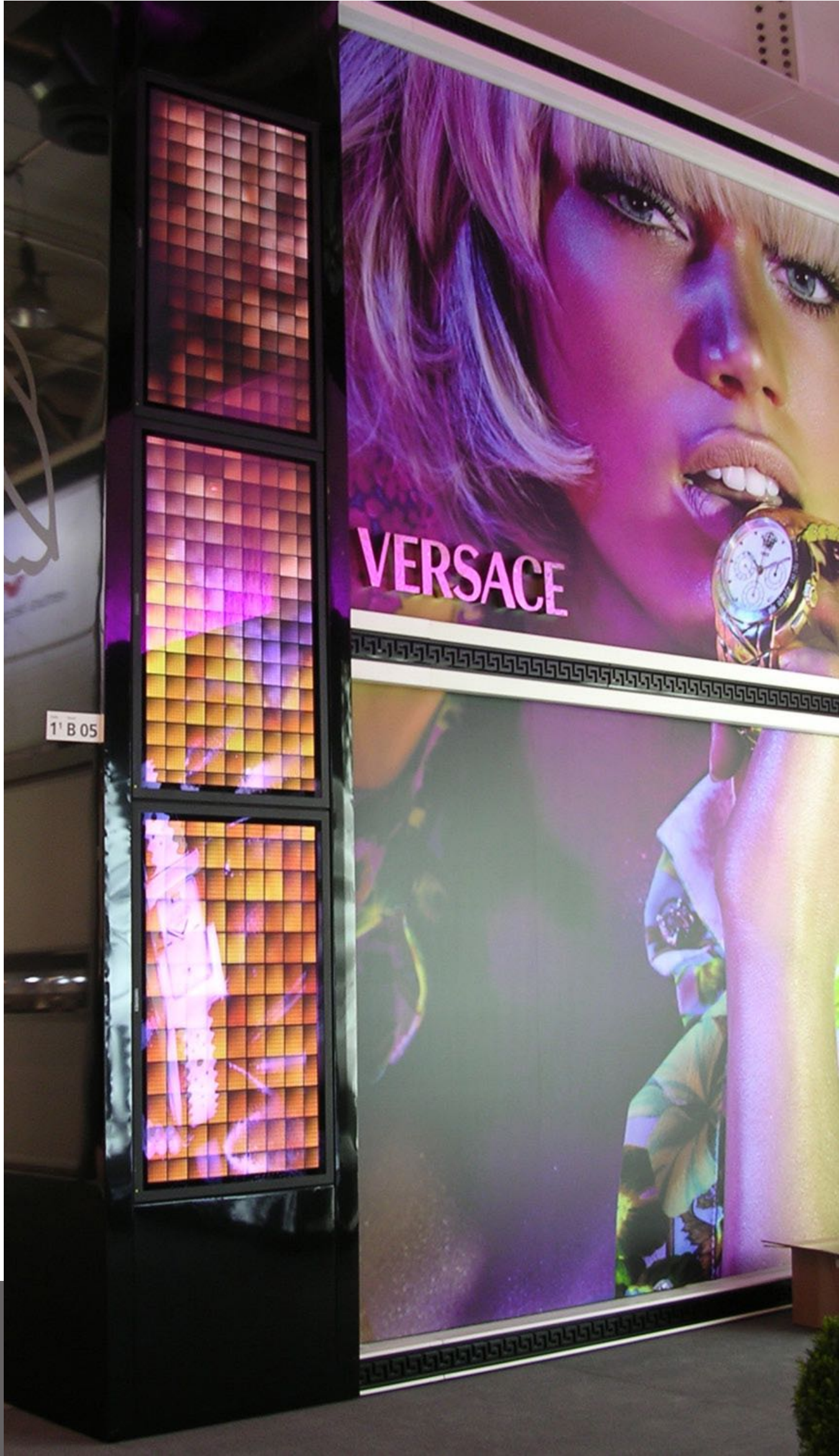
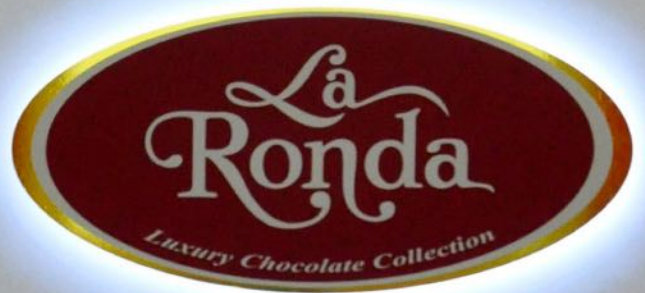
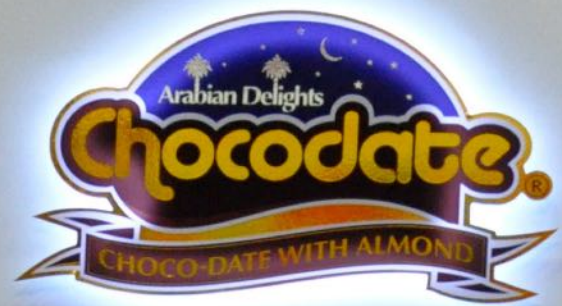




L'OREAL
PROFESSIONNEL
PARIS

smartbond

smartbond





إلى هايبر ميديا
To Hypermedia

- High-Tech
- Smart Solutions
- Data
- Engagement
- Experience
- Journey
- Reach
- Exposure
- Impact
- Measurements
- Hypermedia Plan



HYPERMEDIA
SINCE 1999



الإستعلامات
Information







ZENITH
SWISS WATCH MANUFACTURE
SINCE 1865

ZENITH
SWISS WATCH MANUFACTURE
SINCE 1865




ZENITH
SWISS WATCH MANUFACTURE
SINCE 1890


ZENITH
SWISS WATCH MANUFACTURE
SINCE 1890



PROJECT HIGHLIGHTS

FAST TRACK
MEGA PROJECTS

RETAIL FURNITURE
& POP

3D THEMATIC
STRUCTURES

EXHIBITION &
EVENT BUILDS

BRANDING &
SIGNAGE

**INTERIOR
FIT-OUT**

































THANK YOU

Please visit us on <https://rely-industries.com/>

Phone #: +971 - 4 - 8840662/3

Email: info@rely-industries.com